



Cleveland Metroparks

Chief Executive Officer

Brian M. Zimmerman



5-TIME WINNER

National Gold Medal Award for Excellence
in Park and Recreation Management



19 Million
recreational visits

18 Park
Reservations

OVER
25,000
acres across
49 diverse communities

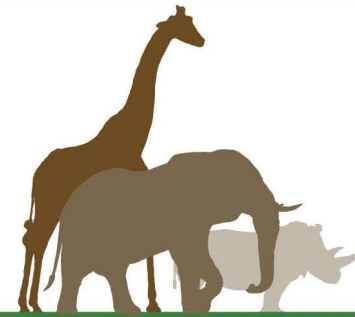
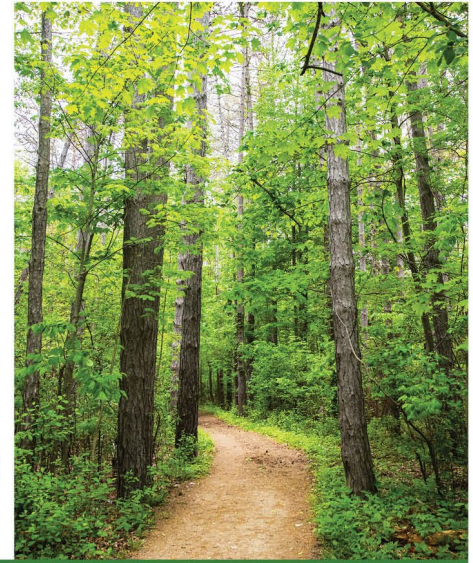
5 Nature Centers



MORE
THAN **75**
rental facilities

325+ MILES
of hiking, biking, bridle
and all purpose trails

Outdoor Experiences
served over a
HALF MILLION
PEOPLE and hosted
OVER 7,000
programs



2,000
ANIMALS
from around the world at
Cleveland Metroparks Zoo

9 SCENIC GOLF
COURSES



2 CHAMPIONSHIP
LAYOUTS

Manakiki and Sleepy Hollow listed in
Golfweek's Best Public Courses



*2024 numbers and figures



SECOND CENTURY OF STEWARDSHIP

OUR MISSION

Protecting nature, connecting communities
and inspiring conservation of our world.



Edgewater Beach House



The 12,000 square-foot, two-story beach house provides increased connections to the beach and Edgewater Park, as well as to nearby neighborhoods.

Guests can take in 360-degree views of Lake Erie, Downtown Cleveland and the nearby neighborhood, enjoy a dual-sided outdoor fireplace, lounge seating and a seasonal full-service food and beverage from the second-level open-air pavilion.

The Centennial Plaza can be utilized as a multifunctional space for special events, live music, gathering and enjoying views of our great lake.

The Noshery and Sunset Picnic Plaza at Huntington Beach

The **Noshery**, home to the new concession building features made-to-order fare, as well as Honey Hut ice cream.

The 4,200-square-foot **Sunset Picnic Plaza** offers a fire pit, picnic tables, arbor, Adirondack chairs and provides a perfect place to enjoy the sunset with a meal, ice cream or beverage from The Noshery.



Karen's Way Play Space

The project was funded by a generous gift from Karen's Way Inc.

Features include: a willow tunnel, slide, a playhouse and small stage, musical play components, two separate swing sets for ages 2-5 and ages 5-12, a water play feature and a 50-foot-long kid-friendly zipline.

The swing set and zipline feature ADA inclusive seating.



Susie's Bear Hollow

Susie's Bear Hollow opened in summer 2023. The project significantly improved and expanded the tropical bear habitats in Wilderness Trek, enhancing guest viewing and animal care efforts with Andean and sloth bears.

New features include climbing structures, elevated resting areas and dig pits to provide opportunities for the well as future reproduction of these keystone species.



Cleveland-Cliffs Bike Park

The new outdoor complex includes several first-of-its-kind features in the region including a public-use paved pump track, outdoor competition course, professional paved jump line and youth-focused bike playground.

New Cleveland-Cliffs Bike Park at Ohio & Erie Canal Reservation, made possible with generous support from The Cleveland-Cliffs Foundation.



Red Line Greenway



A nearly two-mile paved all purpose trail that links the Cleveland Foundation Centennial Lake Link Trail to two RTA Red Line Rapid Transit stations and provides a primary active transportation corridor from West 65th Street to downtown Cleveland.

The accessible trail provides a major east-west connector route as part of the overall Re-Connecting Cleveland project that is expected to be completed next month.

Wendy Park Bridge and Whiskey Island Trail



The two final pieces in the transformational \$16.45 million “Re-Connecting Cleveland” federal Transportation Investment Generating Economic Recovery (TIGER) trails project.

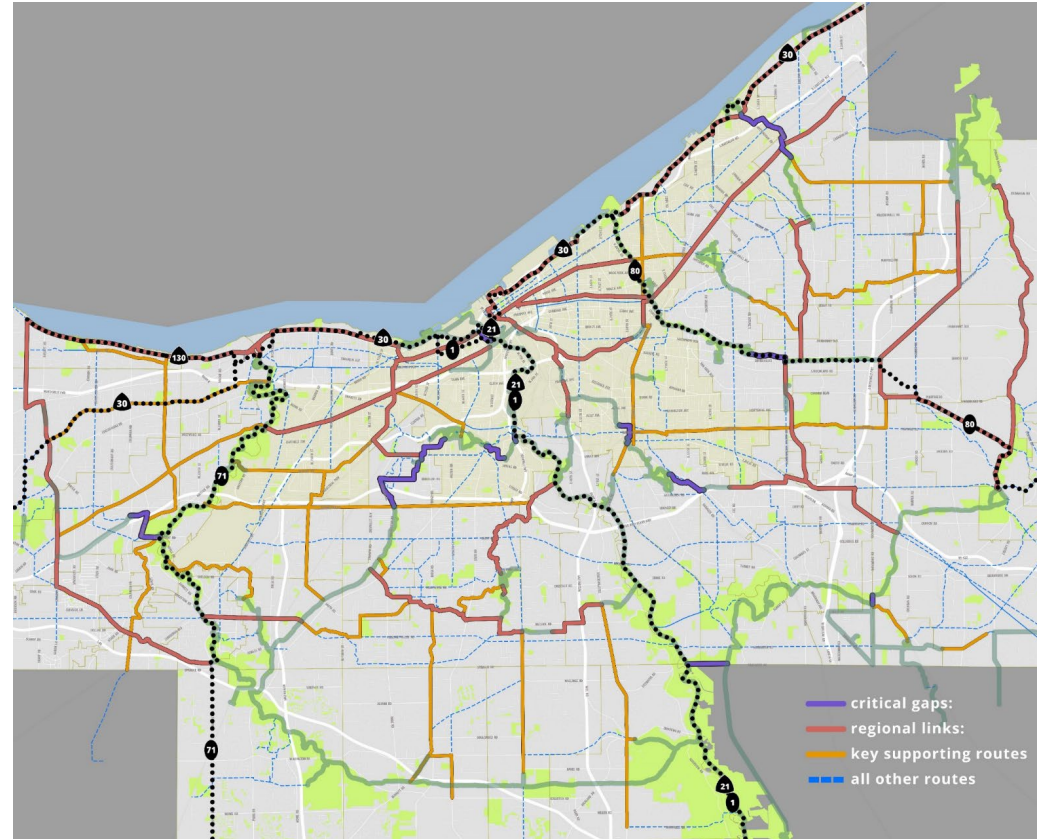
The now complete transportation network consists of 4+ miles of interconnected bike and pedestrian trails along with the signature Wendy Park Bridge.

This connection links more than 66,000 Cleveland residents to centers of employment, schools, parks and commerce and provides a new link between downtown Cleveland and its lakefront.

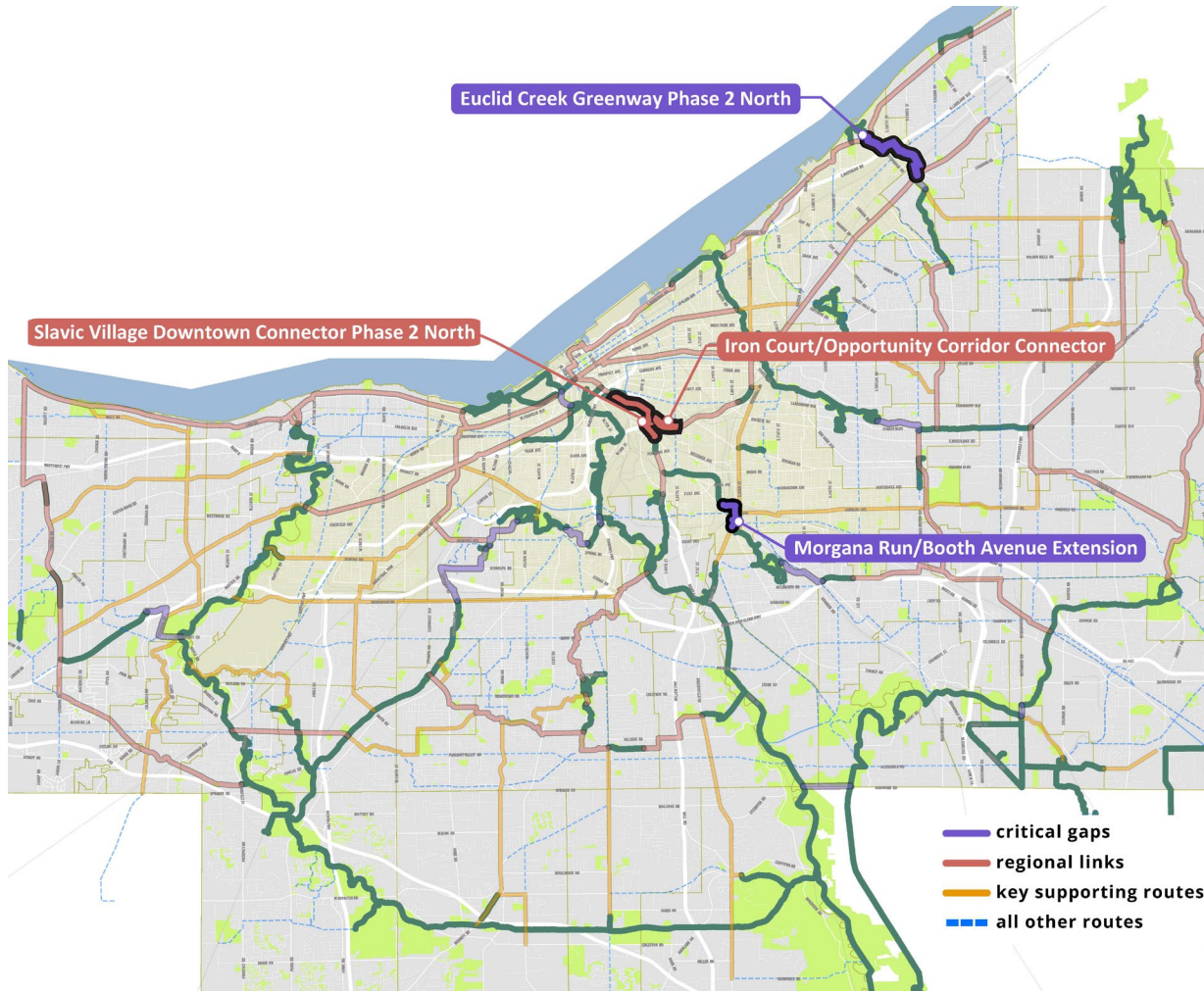
Cuyahoga Greenways Plan

The Cuyahoga Greenways Plan is a countywide blueprint for trail development that will create a healthier and more sustainable future for residents of the region. Connecting people to jobs, transit, and parks, though expanded mobility options crossing municipal boundaries, will promote regional collaboration as routes are integrated into future capital projects and land use planning.

This proposed Greenways network is of the result of a planning effort coordinated by the Cuyahoga County Planning Commission, Cleveland Metroparks, and the Northeast Ohio Areawide Coordinating Agency (NOACA) with funding provided by NOACA's Transportation for Livable Communities Initiative (TLCI).



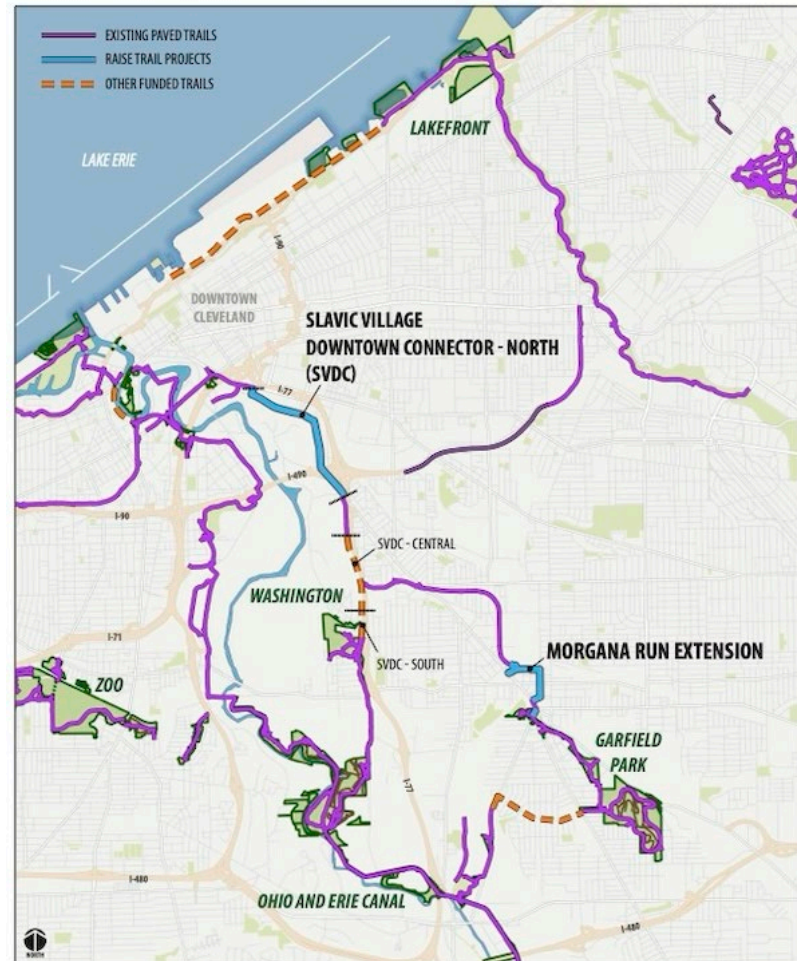
Cuyahoga Greenways Plan



\$19.5 Million Award from Rebuilding American Infrastructure with Sustainability and Equity (RAISE)

Cleveland Metroparks was recently awarded a \$19.5 million federal grant, the largest ever bestowed upon the organization, by the U.S. Department of Transportation's Rebuilding American Infrastructure with Sustainability and Equity (RAISE) program.

The investment fully funds construction of two key trail projects, the Slavic Village Downtown Connector North and the Morgana Run Extension, both identified in the Cuyahoga Greenways Plan.



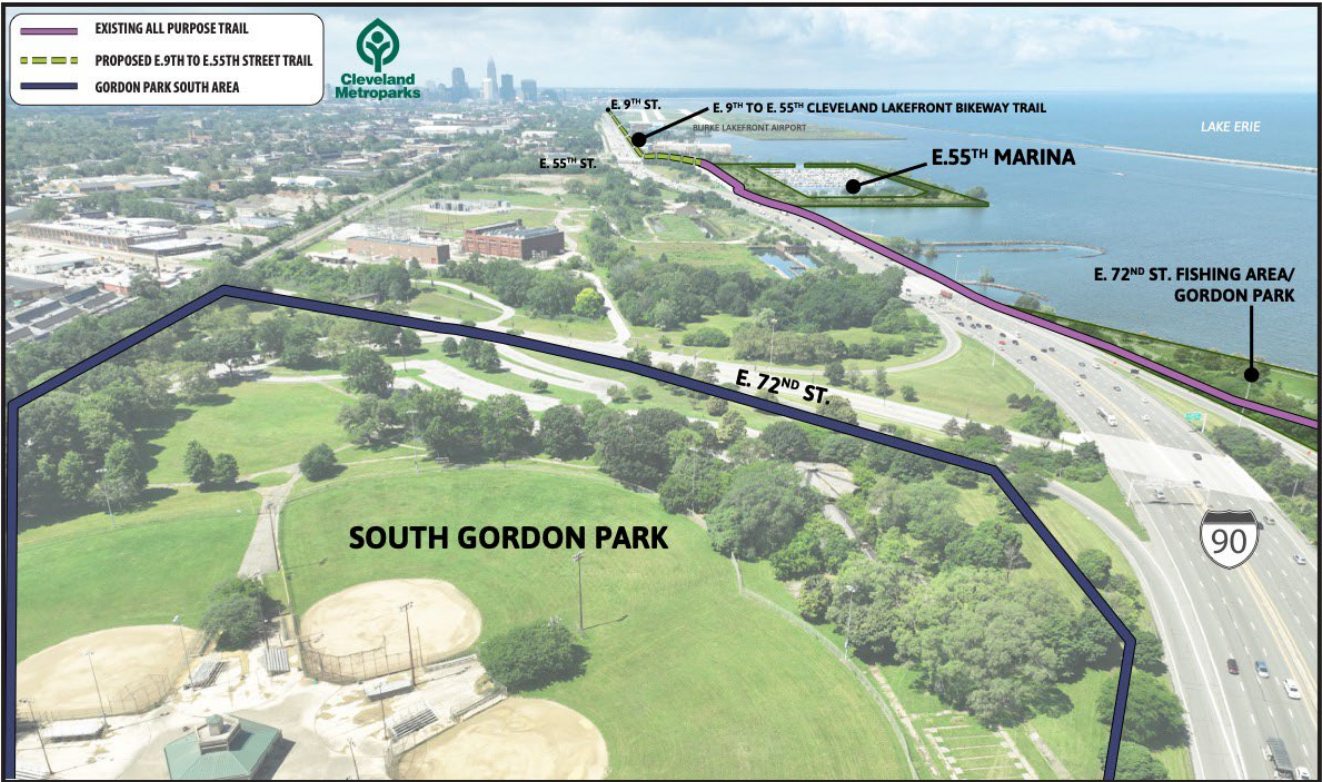
2024 RAISE CONSTRUCTION GRANT AWARD - SLAVIC VILLAGE DOWNTOWN CONNECTOR NORTH & MORGANA RUN EXTENSION
CLEVELAND METROPARKS

JUNE 2024
Cleveland Metroparks

Mandel Community Trail – E. 9th to E. 55th St.

Construction is underway on the Mandel Community Trail that will extend the paved all purpose trail from East 9th Street to East 55th Street adjacent to the Lake Erie shoreline.

The two-mile trail will provide the millions of visitors and guests to Cleveland’s lakefront with a direct connection from downtown to University Circle. The project is supported by an historic gift by the Jack, Joseph and Morton Mandel Foundation.



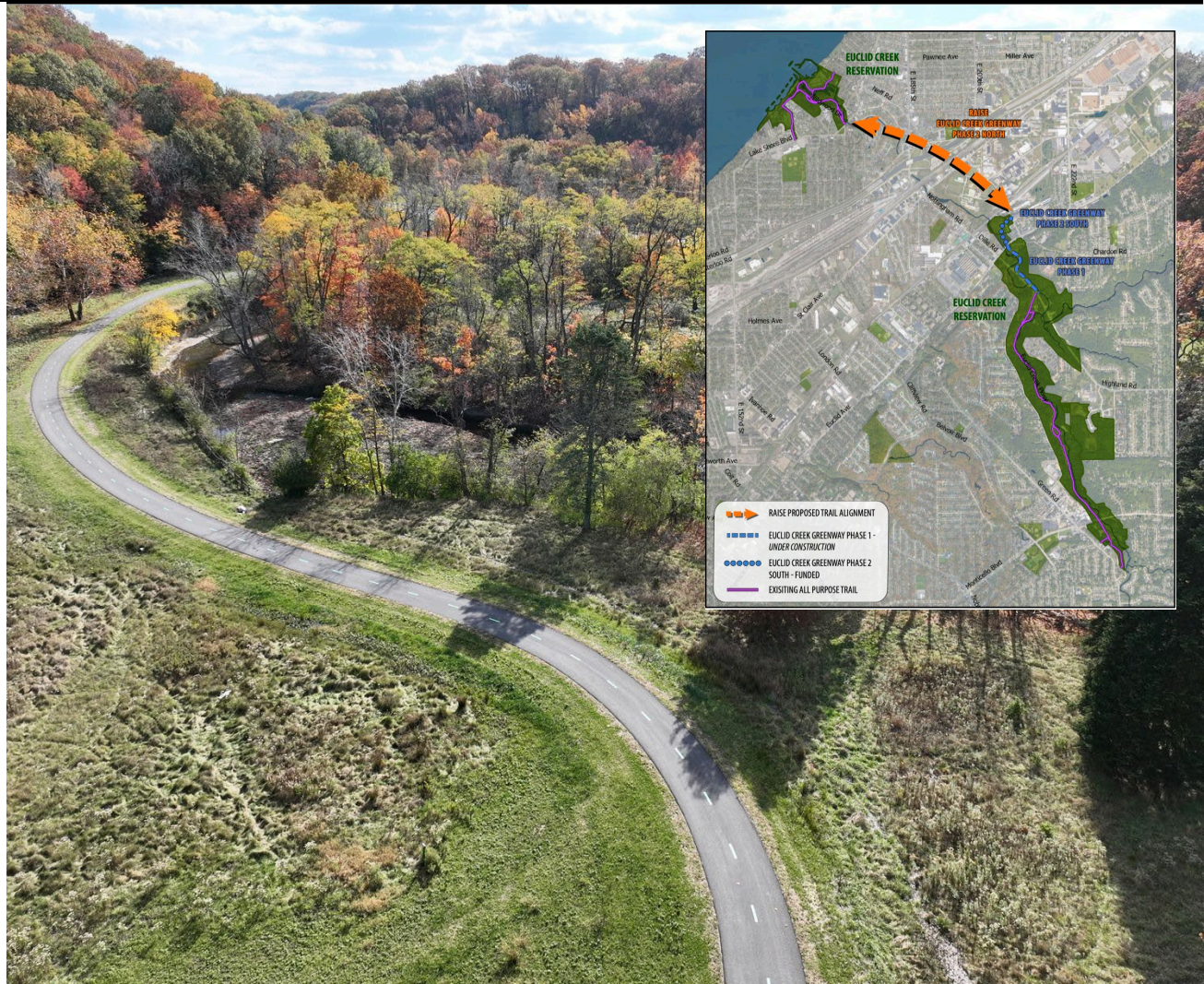
GORDON PARK SOUTH & E. 9TH TO E. 55TH CLEVELAND LAKEFRONT BIKEWAY

JULY 2023

Euclid Creek Greenway

Euclid Creek Greenway is a multi-phased trail project to improve connections to the lakefront on the east side of Cleveland.

The project will close a critical transportation gap in the region and connect the lower portion of Euclid Creek Reservation to its northern portion along the lakefront that includes Euclid Beach, Villa Angela and Wildwood parks in the city of Cleveland.



Garfield Pond Restoration

Cleveland Metroparks and its partners are working to restore the historic Garfield Pond at Garfield Park.

The project includes the restoration of Garfield pond, Wolf Creek and adjacent wetlands as well as a new program center.

The pond will serve as the hub for Cleveland Metroparks Youth Outdoors and Outdoor Recreation programming including; youth fishing and 'try it' watersports including kayaking, fishing, and stand-up paddle boarding.



Wallace Lake

Wallace Lake Improvement Project is adding new concessions and restroom buildings, an outdoor classroom, and a recreation education area to this popular spot in Mill Stream Run Reservation.



Cleveland Harbor Eastern Embayment Resilience Strategy (CHEERS)

CHEERS is led by the Port of Cleveland, Cleveland Metroparks, the City of Cleveland, the Ohio Department of Natural Resources, the Ohio Department of Transportation and Black Environmental Leaders Association, a statewide non-profit advocacy group.



Former Hornblower's Barge At Wildwood Marina



The 131-year-old Victorian-aged lake freighter Barge 225 arrived at its new home in late 2023 at Wildwood Park in Euclid Creek Reservation.

Patrick S. Parker Community Sailing Center



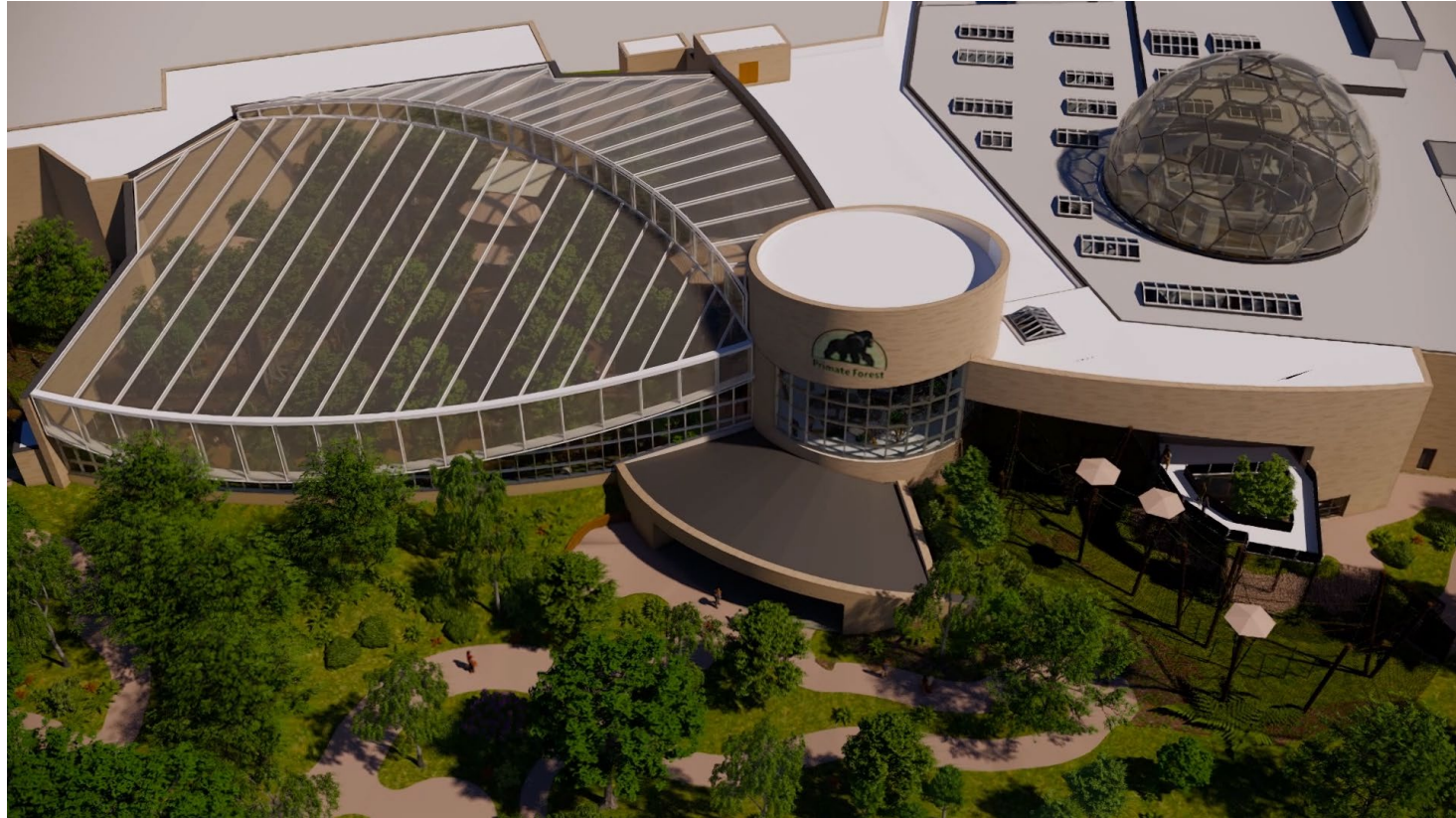
The Patrick S. Parker Community Sailing Center is a world-class community center coming to E. 55th Street Marina.

The Sailing Center will be the first of its kind along Lake Erie in Ohio, providing unprecedented public access and sailing opportunities to the region.

Primate Forest at Cleveland Metroparks Zoo

Construction is underway on most significant capital project in the Zoo's history.

Primate Forest will include four innovative and interactive spaces – the CrossCountry Mortgage Forest Home, and three distinct animal habitats, Tropical Forest, Orangutan Forest and Gorilla Forest.



Stay Connected



@CEO_CleMetParks

@clevelandmetroparks

@clemetzoo